

Hammer Unions

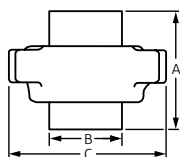
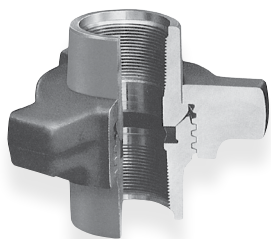
6,000 psi cwp – 9,000 psi test

Fig. 602 Threaded Ends Black Nut/Orange Subs

Fig. 602 Buttweld Ends Schedule XXH Black Nut/Orange Subs

Figure 602

Threaded Ends
Black Nut/Orange Subs

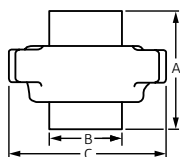


Compact design is well-suited for manifold service.
Employs a double seal that combines an elastomeric gasket with a metal-to-metal connection.

Size		Unit Weight		A		B		C		TPI	Material	
NPS	DN	lbs	kg	in	mm	in	mm	in	mm		Nuts	Subs
1	25	3.55	1.61	6.625	168.28	1.750	44.45	4.500	114.30	6 STD	SF	SF
1½	40	9.54	4.33	4.600	116.84	2.570	65.28	5.520	140.21	4 STD	SF	SF
2	50	12.40	5.62	5.300	134.62	2.970	75.44	6.875	174.63	3 MOD	SF	SF
3	80	22.30	10.11	6.310	160.27	4.250	107.95	8.875	225.43	3 MOD	SF	SF
4	100	36.60	16.60	8.420	214	5.325	136.25	10.430	265	3 MOD	SF	SF

Figure 602

Buttweld Ends
Schedule XXH
Black Nut/Orange Subs



Compact design is well-suited for manifold service.
Employs a double seal that combines an elastomeric gasket with a metal-to-metal connection.

Size		Unit Weight		A		B		C		TPI	Material	
NPS	DN	lbs	kg	in	mm	in	mm	in	mm		Nuts	Subs
3	80	21.25	9.64	6.310	160.27	4.250	107.95	8.875	225.43	3 MOD	SF	SF

Warnings: 1. Do not make up or break out Unions in pressurized lines. 2. Always use good safety practices, including use of safety glasses, when making up or breaking out Unions.
TPI = Threads per inch • SF = Steel Forging

PROJECT INFORMATION	APPROVAL STAMP
Project:	Approved
Address:	Approved as noted
Contractor:	Not approved
Engineer:	Remarks:
Submittal Date:	
Notes 1:	
Notes 2:	

Fig. 602 Threaded Ends Black Nut/Orange Subs
Fig. 602 Buttweld Ends Schedule XXH Black Nut/Orange Subs



Material

ASTM A29, A105

Full Traceability

All Catawissa Oilfield Hammer Unions are fully traceable and are available with complete mill certifications upon request.

Interchangeability

All Catawissa Oilfield Unions are machined to rigid quality standards ensuring that like components of the same size, figure number and pressure rating are fully interchangeable in the field. Catawissa Oilfield Unions are interchangeable with most leading union manufacturers.

Full Range of End Connections

Catawissa Oilfield Hammer Unions are available in threaded ends, as well as buttweld and non-pressure seal ends. When you choose Catawissa you receive the utmost in quality, the widest selection and unmatched on-time deliveries.



asc-es.com

Building connections that last™

Fig. 602 Threaded Ends Black Nut/Orange Subs
Fig. 602 Buttweld Ends Schedule XXH Black Nut/Orange Subs

Catawissa Quick Reference Chart

Standard Service												
Fig. No.	CWP	TEST	API Color Code		Pipe Size (in.)							
			SUB	NUT	1"	1¼"	1½"	2"	2½"	3"	4"	6"
100	1,000	1,500	Yellow	Black								
200	2,000	3,000	Gray	Blue								
206	2,000	3,000	Gray	Blue								
211	2,000	3,000	Light Blue	Gray								
300	2,000	3,000	Yellow	Gray								
301	3,000	4,500	Green	Black								
400	4,000	6,000	Red	Black								
602	6,000	9,000	Orange	Black								
607	6,000	9,000	Silver	Yellow								
1502	15,000	22,500	Red	Blue								